

Re-engineering and function testing at Handtmann Zittau

WELCOME



Agenda

Generell Information

Handtmann Zittau – Re-engineering

Handtmann Zittau – Function testing

Generell Information

With the Second-hand Machine Centre in Zittau, Handtmann offers its international customers the approved Handtmann quality in the business with used-machines – by means of re-engineering and function testing.



Handtmann Maschinenvertrieb GmbH & Co.KG
Niederlassung Zittau
Dittelsdorfer Str. 7
D-02763 Zittau

phone: +49-3583/79790-0
www.handtmann.de/zittau

Assembly of a VF 200

- What is reconditioned?
 - 100% of vacuum pumps are new
 - 100% replacement of all gear bearings and seals
 - 100% inspection of proportional valves; replaced if faulty
 - 100% replacement of meat pump and side plate
 - 60 - 70% of pipes are replaced
 - 100% of machine feet (plastic parts) are replaced
 - 100% replacement of proportional valve cables and machine supply cable



Handtmann Zittau – Re-engineering

Assembly of a VF 200

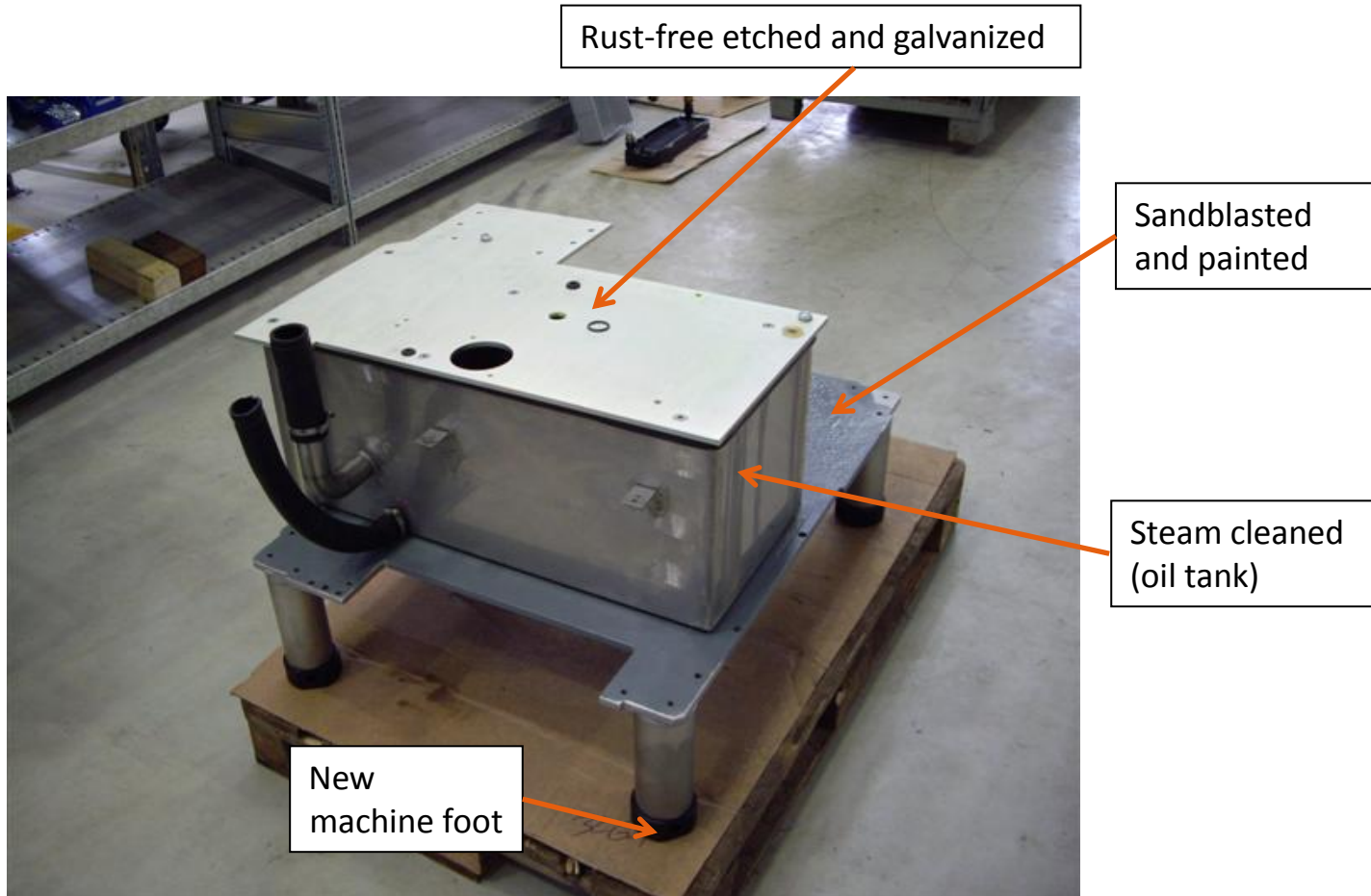
- What is reconditioned?
 - 100% recondition of hopper swivelling mechanism
 - 100% replacement of torsion springs on the swivel housing
 - 100% replacement of bearings and toothed belt on the linking drive
 - General rust-free etching, sandblasting and re-galvanizing of: gear cover plate and oil tank cover as well as supporting steel components on VF 50/100

Handtmann Zittau – Re-engineering

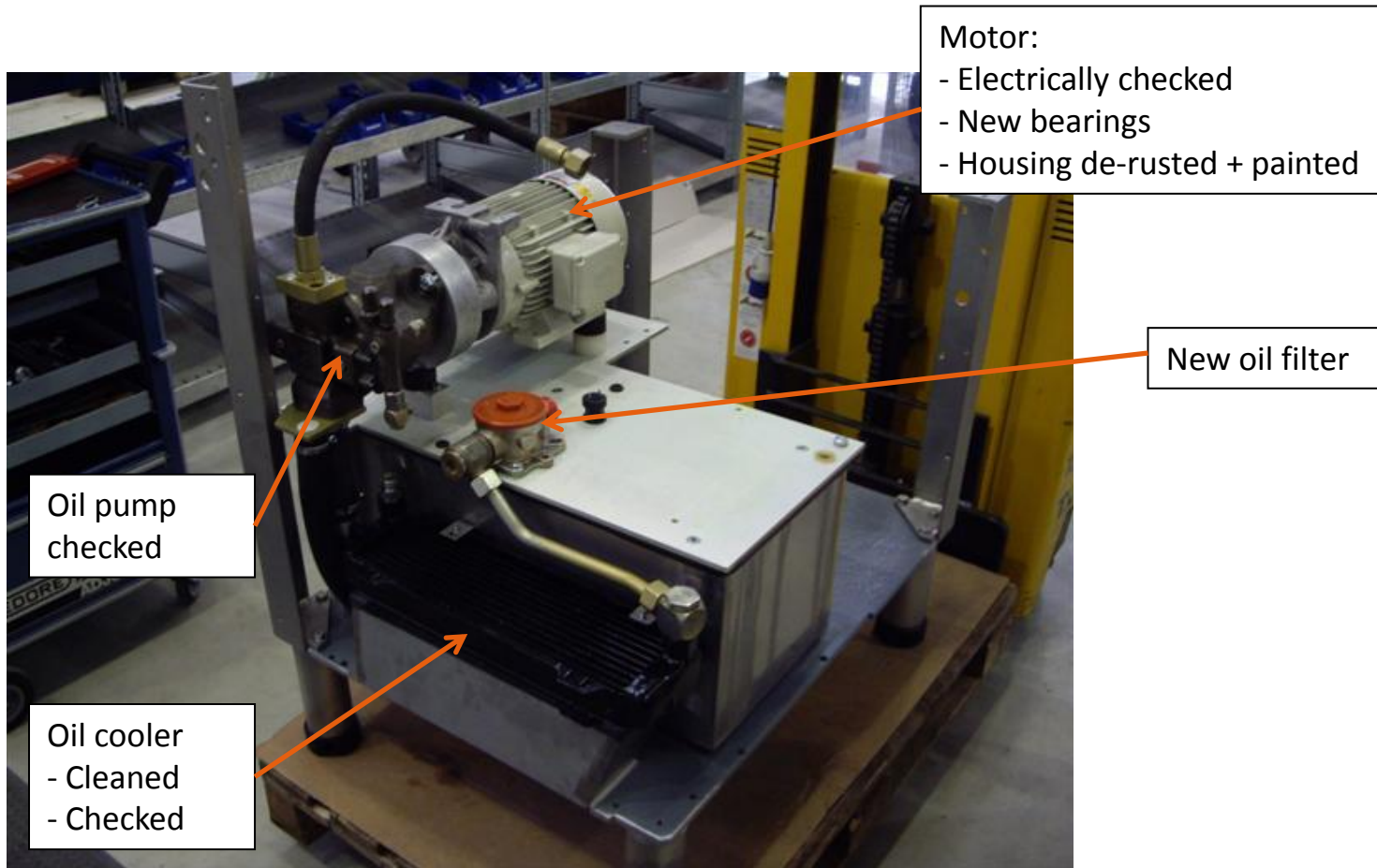
Assembly of a VF 200

- What is reconditioned?
 - Sandblasting and painting of steel baseplate and portal components (VF 80/200/300)
 - 100% of electric motors are electrically checked and fitted with new bearings
 - 100% of control systems are checked; replaced if faulty
 - 100% of housing and hopper are shot-blasted
 - 100% of linking gear box is completely reconditioned

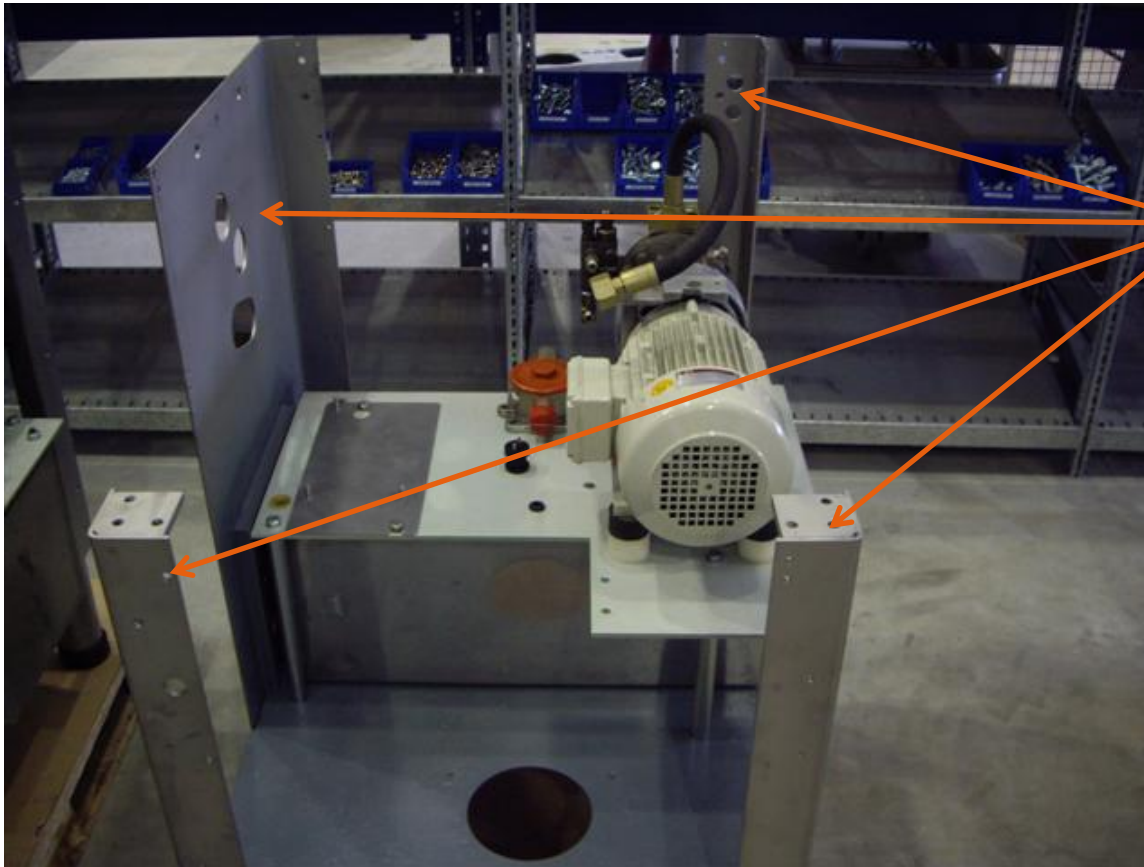
Assembly of a VF 200



Assembly of a VF 200



Assembly of a VF 200

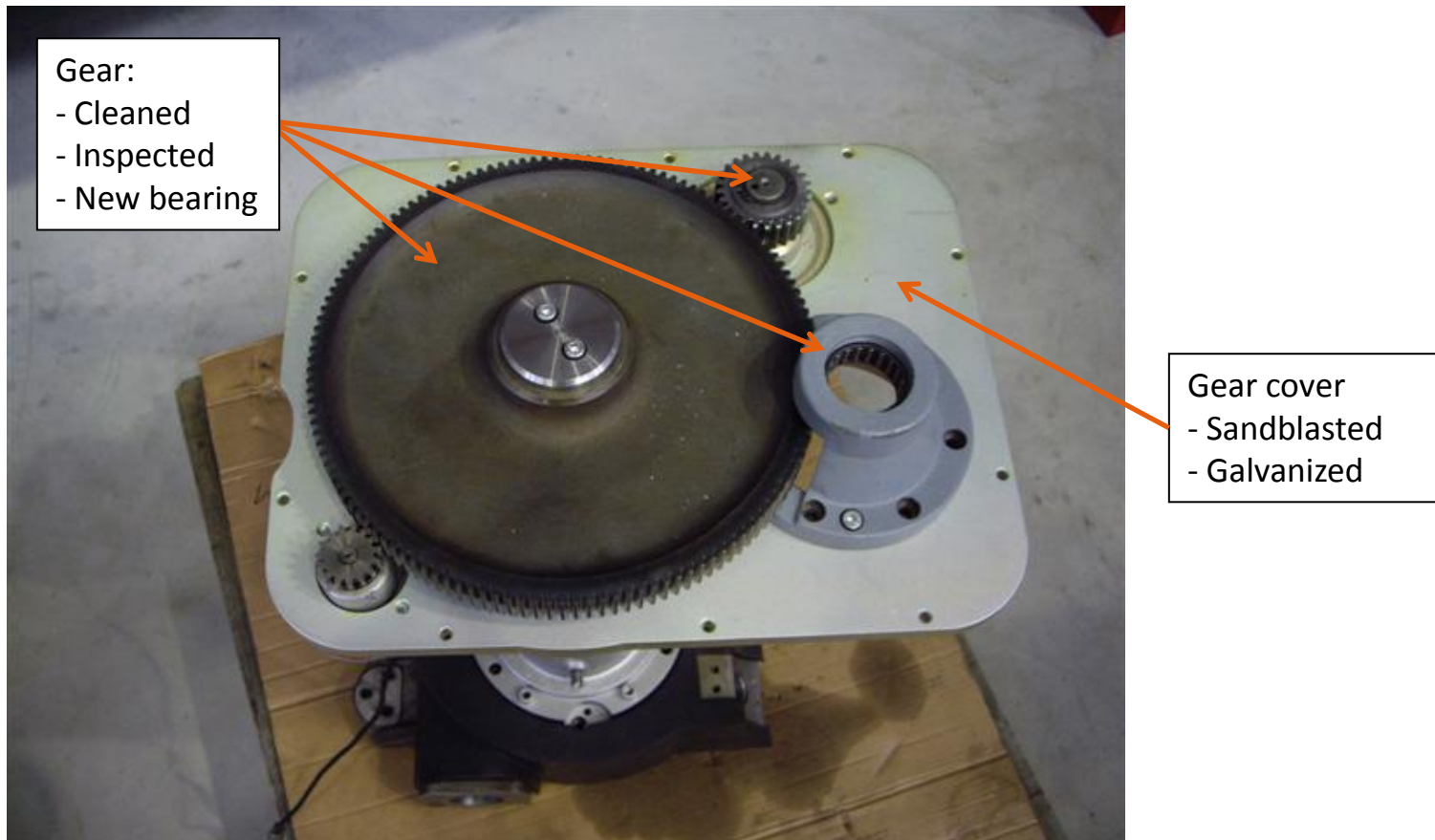


- De-rusted
- Shot-blasted

Handtmann Zittau – Re-engineering

Assembly of a VF 200

All bearings in the gear column are replaced.



Handtmann Zittau – Re-engineering

Assembly of a VF 200

Portal:

- De-rusted
- Steel parts painted
- Stainless steel parts shot-blasted

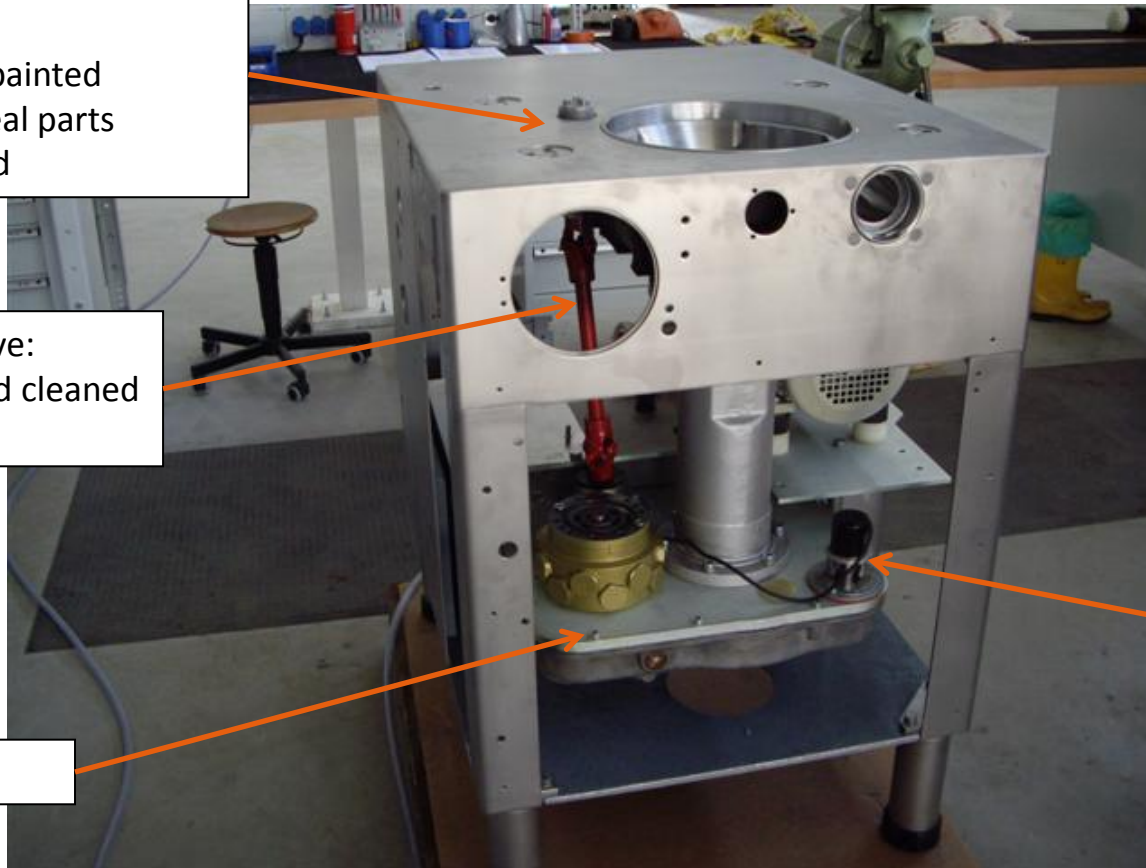
Universal drive:

- Inspected and cleaned
- or replaced

New seal

Rotational-speed sensor:

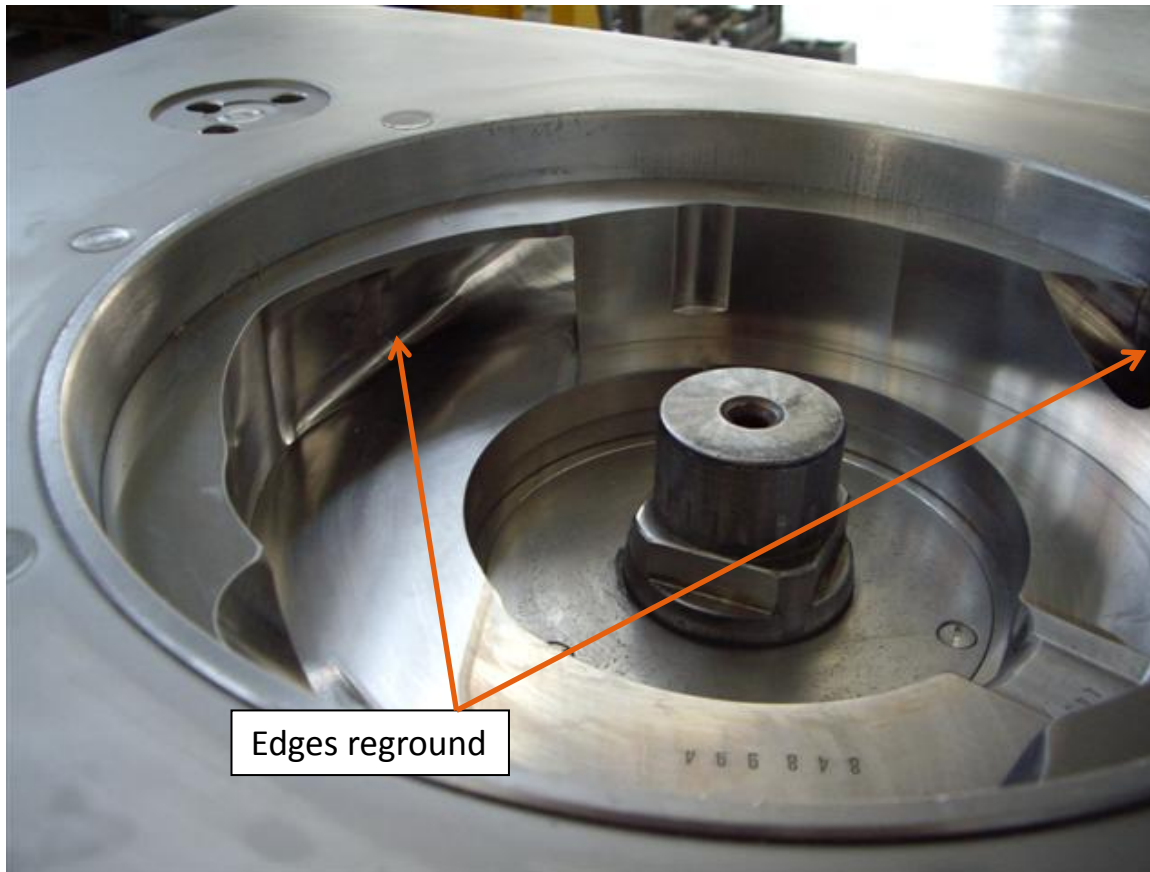
- Cleaned
- New seal



Handtmann Zittau – Re-engineering

Assembly of a VF 200

New meat pump



Assembly of a VF 200



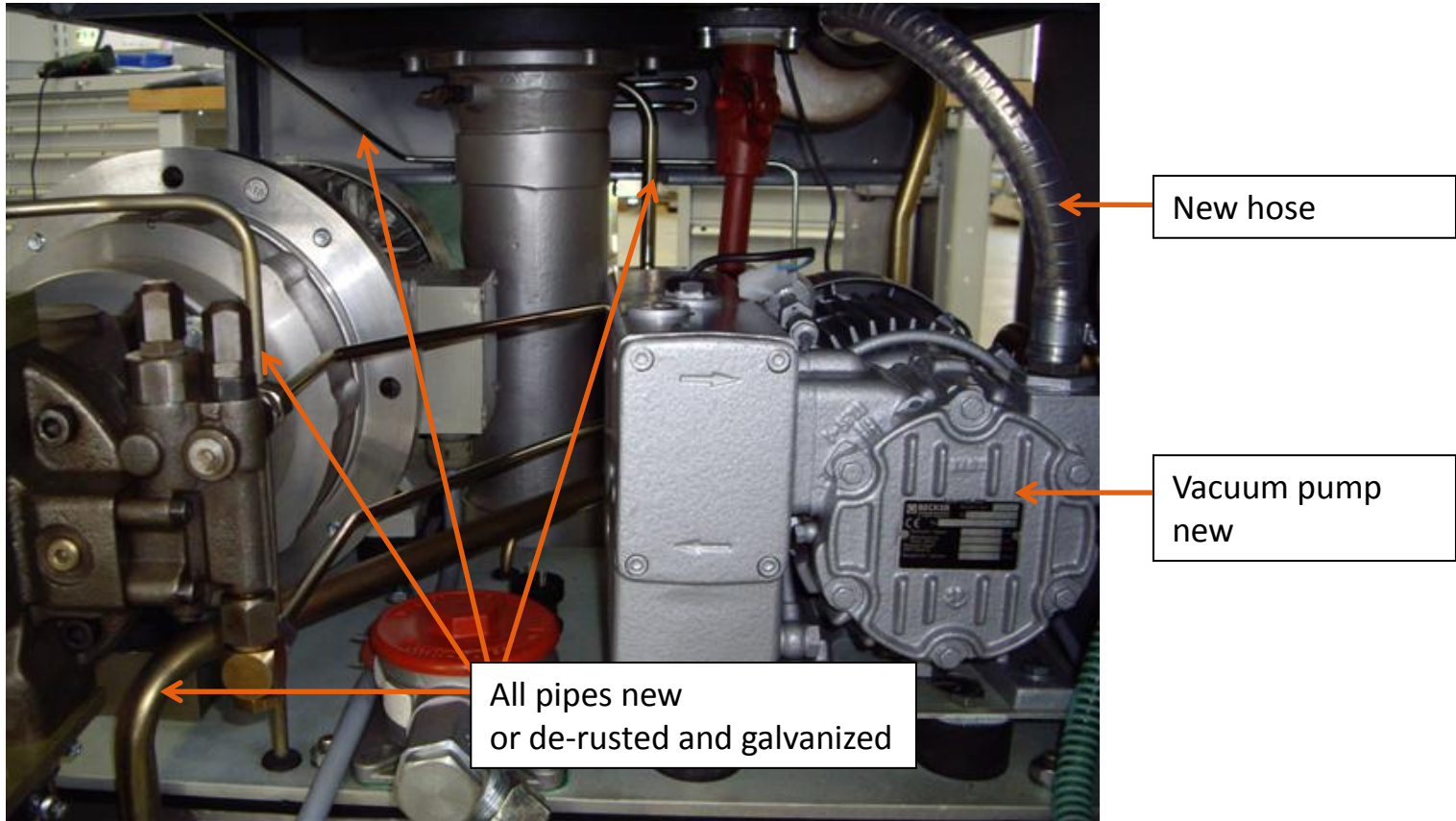
Cleaned

Cylinder:
- Inspected
- Cleaned

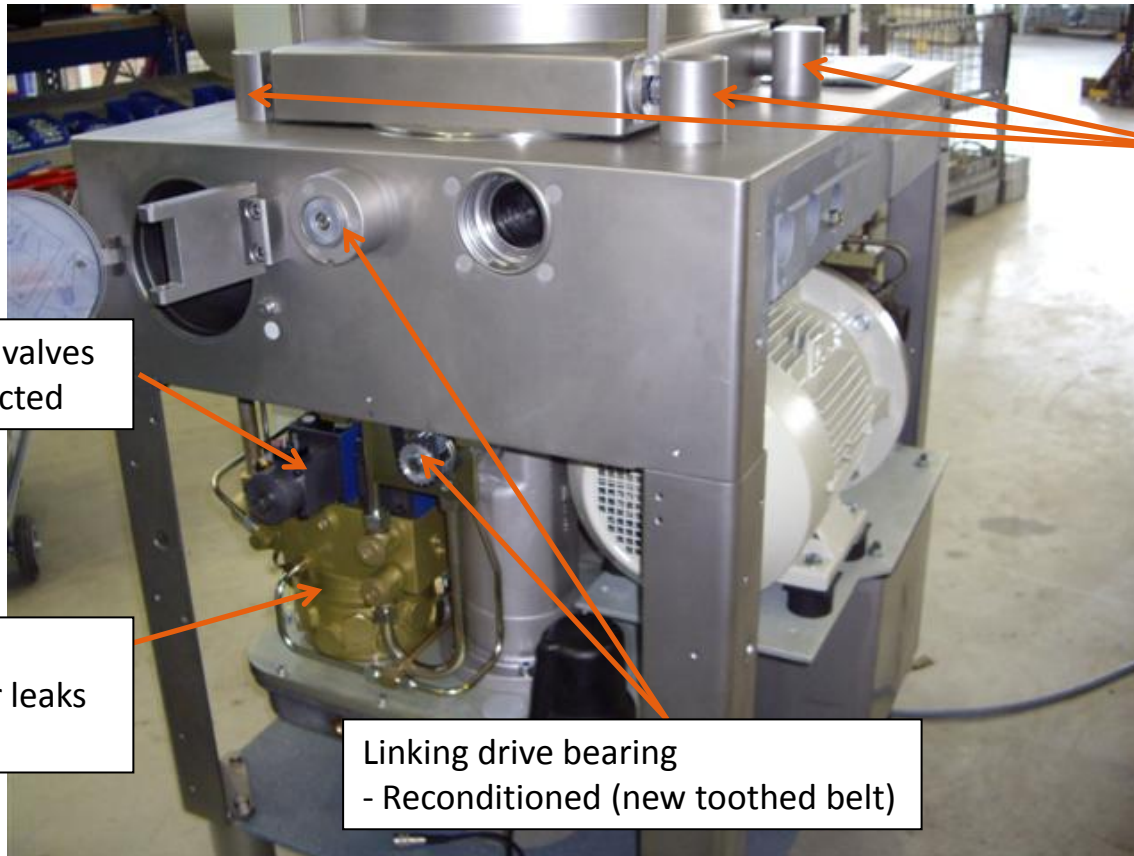
Swivel housing
- Cleaned
- Shot-blasted

New side plate

Assembly of a VF 200



Assembly of a VF 200



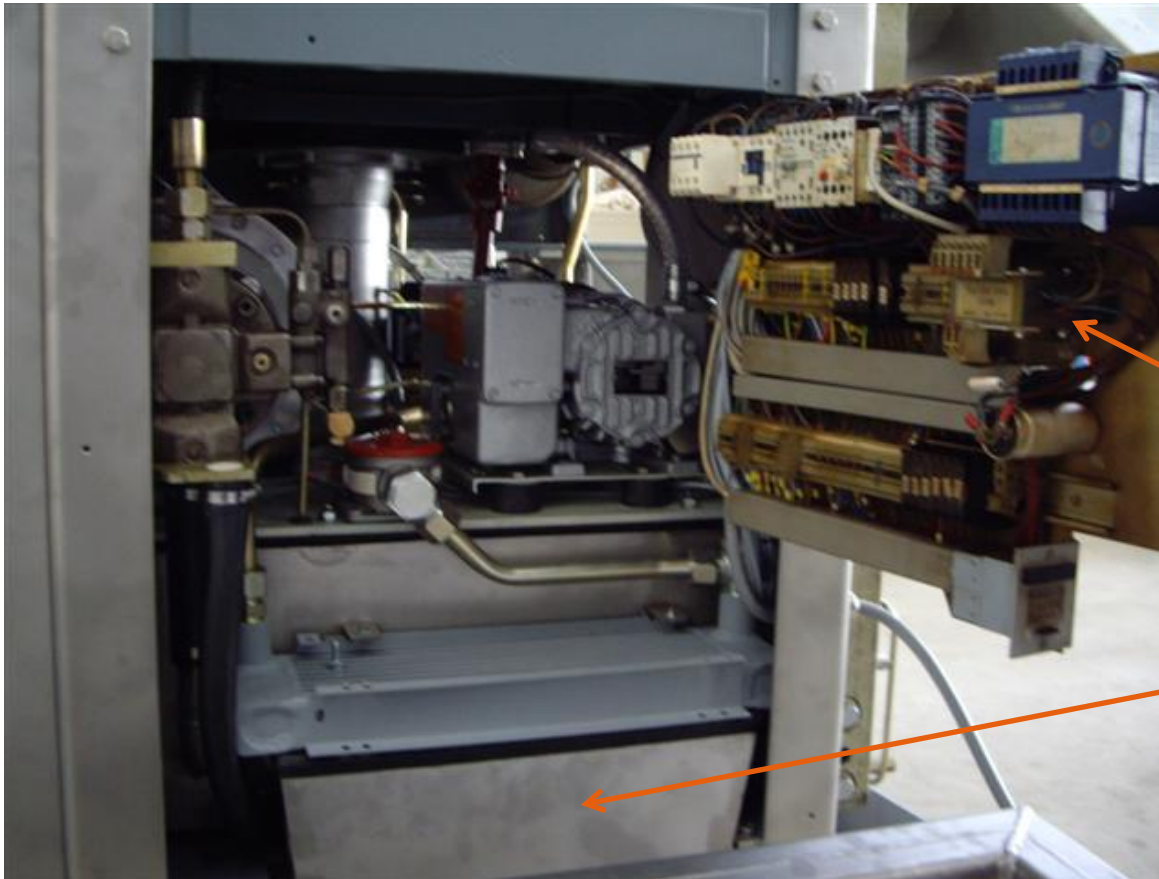
Supports:
- Shot-blasted
- New dry bushings
- New disc springs

Proportional valves
new or inspected

Oil motor:
- Checked for leaks
- Cleaned

Linking drive bearing
- Reconditioned (new toothed belt)

Assembly of a VF 200



Electrically checked
(30-50% of cables
are replaced on
every filler)

Stainless steel air shaft

Handtmann Zittau – Re-engineering

Assembly of a VF 200



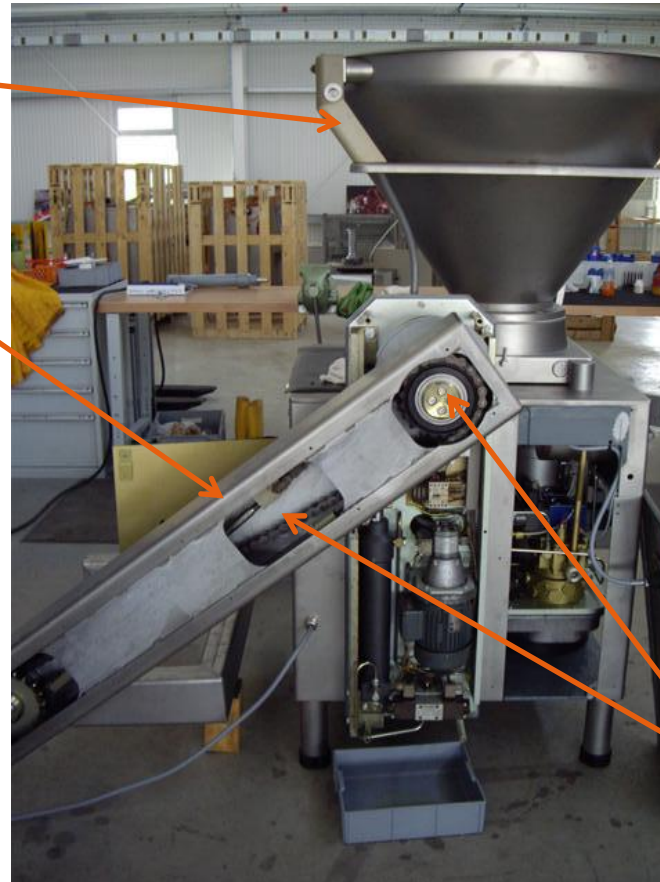
- Control checked;
replaced if faulty
- New switches
- New hour counter

Handtmann Zittau – Re-engineering

Assembly of a VF 200

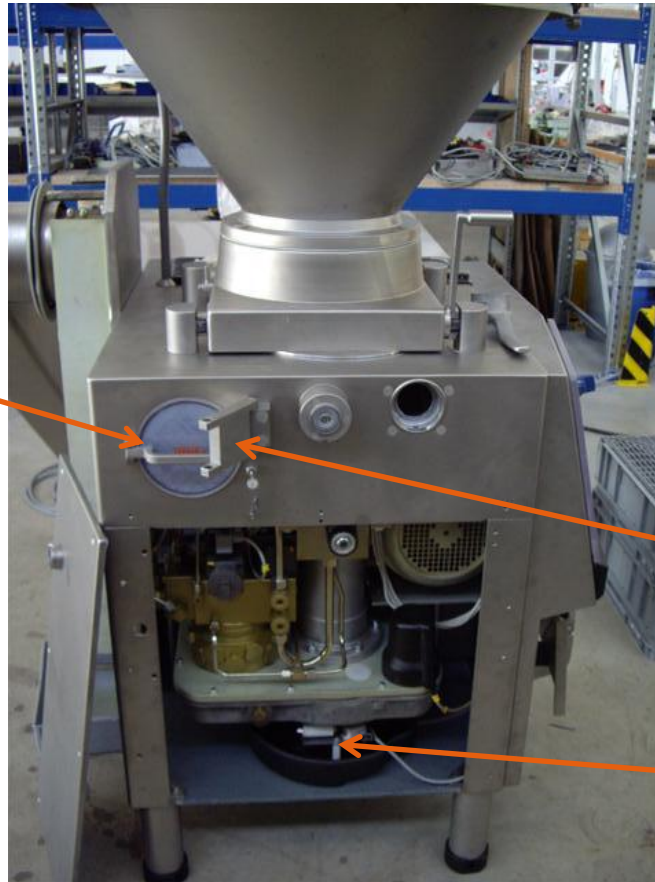
Hopper column :
- Reconditioned
(new springs)

Swivel housing :
- Cleaned
- Shot-blasted
if stainless steel



Chain + sprockets :
- Cleaned
- Inspected

Assembly of a VF 200



New cover

Bracket:
- Shot-blasted

Ventilator checked

Handtmann Zittau – Re-engineering

Assembly of a VF 200

- The service
 - Re-engineered
 - Handtmann inspected
 - Handtmann quality seal
 - Handtmann spare parts
 - Factory warranty
 - Worldwide service via Handtmann sales and service partners



Handtmann Zittau – Function testing

Function testing VF 608

- What is tested?
 - 100% perform full Handtmann service
 - 100% check of vacuum system;
repaired if necessary
 - 100% function test of controls;
replaced if faulty
 - 100% function test of servo-drives,
replaced if faulty
 - 100% check of side-plate;
replaced if cracked or high wear

Handtmann Zittau – Function testing

Function testing VF 608

- What is tested?
 - 100% check of meat pump;
replaced if high wear
 - 100% check of machine safeties
 - 100% of linking gear box is completely reconditioned
 - Quality check of Vacuum Filler with Q-Check

Handtmann Zittau – Function testing

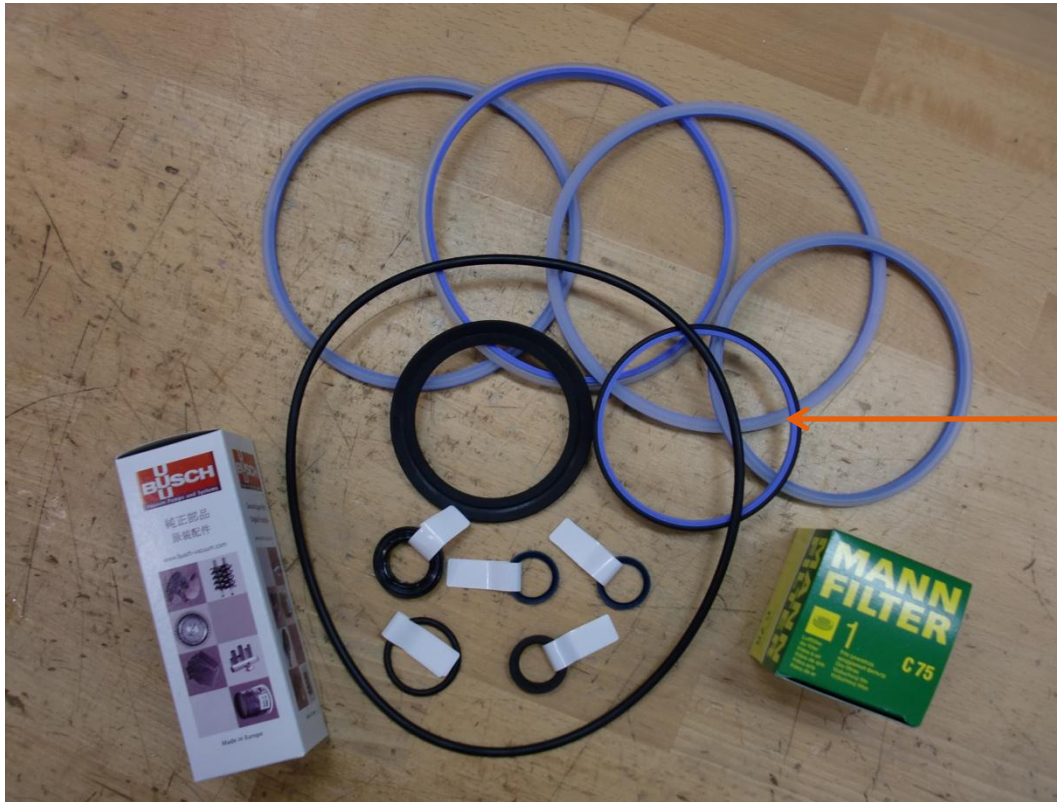
Function testing VF 608



Machine status of
Vacuum Filler checked

Handtmann Zittau – Function testing

Function testing VF 608



Perform a full
Handtmann Service

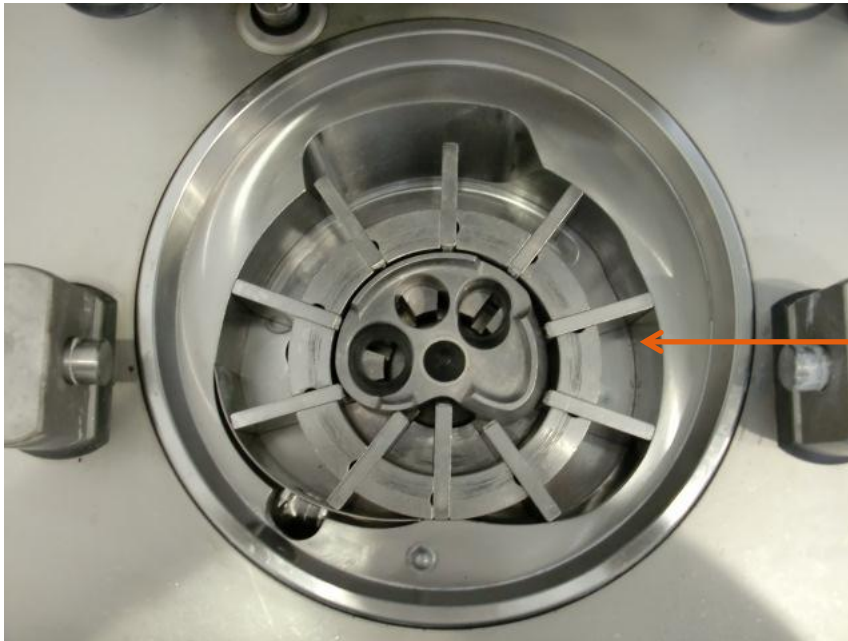
Function testing VF 608



Check of side-plate;
Replaced if cracked or
high wear

Handtmann Zittau – Function testing

Function testing VF 608



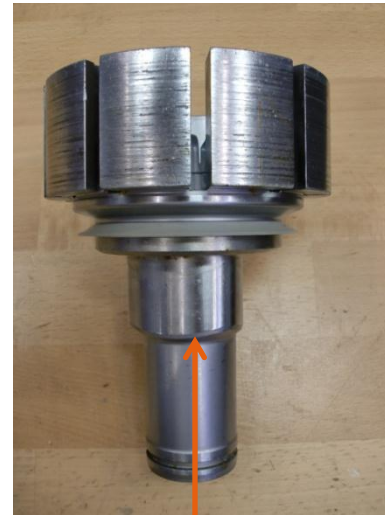
Check of meat pump;
Replaced if high wear

Handtmann Zittau – Function testing

Function testing VF 608



Rotor within tolerance
→ Remain in machine



Rotor outside tolerance
→ Replaced by a new one

Handtmann Zittau – Function testing

Function testing VF 608



100 % re-engineering of
linking gearbox 34-5



Function testing VF 608

Final inspection of machines with Handtmann Q-Check, like new machines



Handtmann Zittau – Function testing

Pictures of a refurbished VF 620, year 2001



Thank you for your attention!